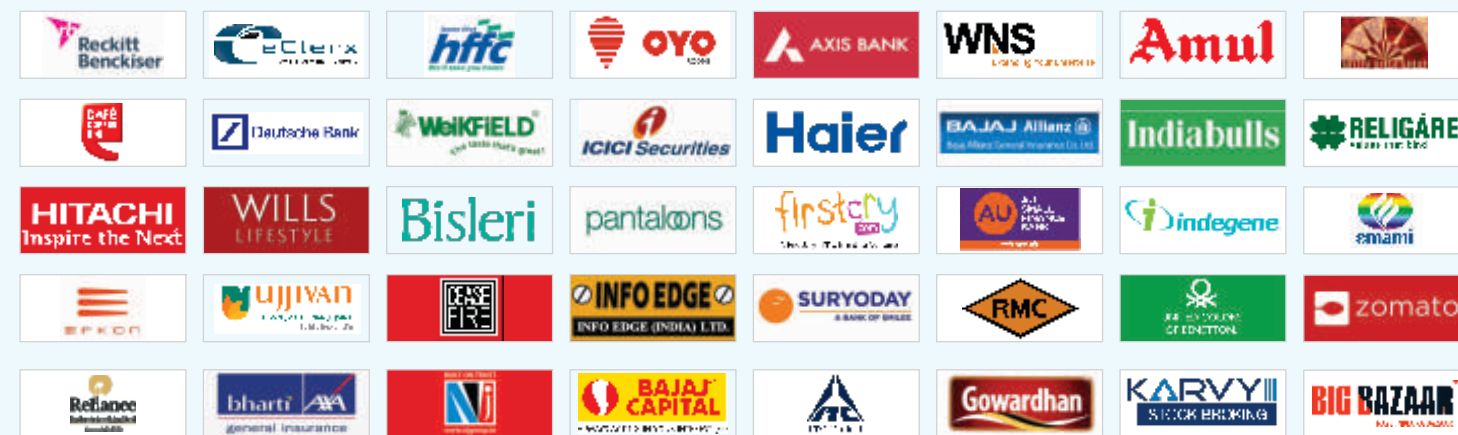


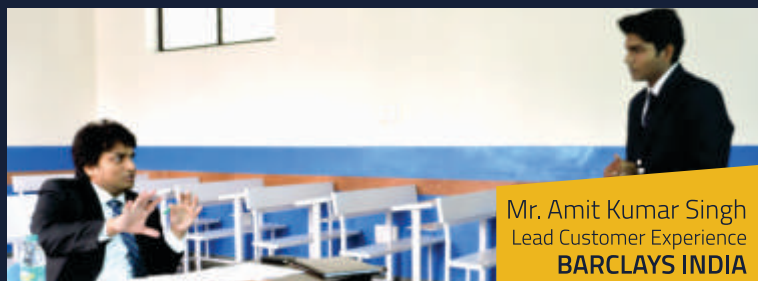
# EXISTING RECRUITERS OF PIBM GROUP OF COLLEGE



Building confident personalities for the competitive corporate world by training students rigorously to enhance their Communication, Aptitude and Presentation skills and making them efficient in GDs and PIs through Mock GD and PI sessions.



Mr. Suraj Narain  
VP Talent Acquisition  
AXA Business



Mr. Amit Kumar Singh  
Lead Customer Experience  
BARCLAYS INDIA



Mr. Shrikant Nayak  
Assistant Vice President  
KOTAK BANK



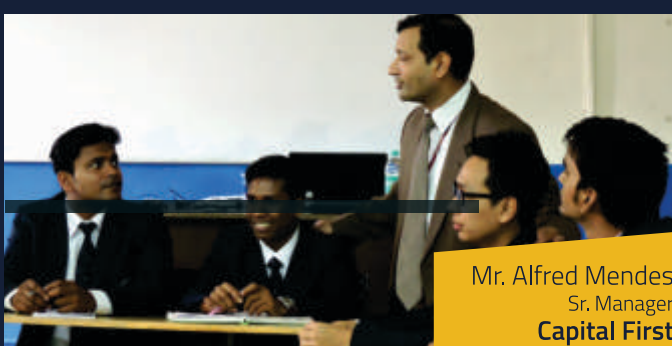
Mr. Diniar Patel  
Managing Editor (Innovations) cum Editor (Supplements)  
TIMES OF INDIA



Ms. Fatima Abbas  
HOD – Communication



Mr. Sunil Kumar Singh  
VP Sales  
UM MOTORS



Mr. Alfred Mendes  
Sr. Manager  
Capital First

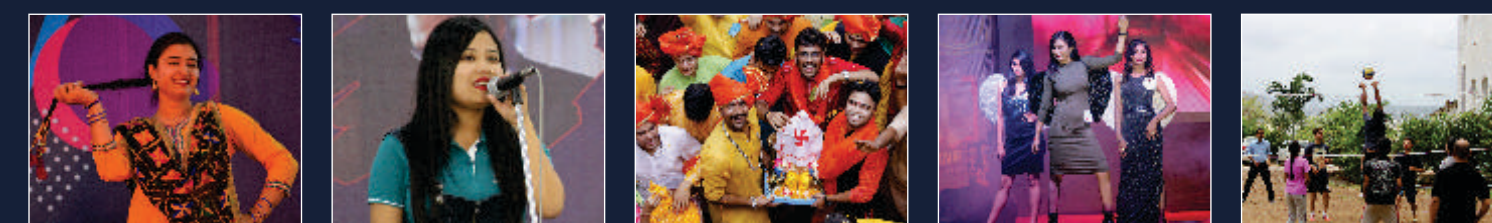
## BUILDING CONFIDENCE

We understand the demands of Corporate World today which looks for Management Graduates having not only Knowledge & Skills but also who are Smart, Sharp & Confident. Rigorous training on improving Business Communication, Presentation skills, Aptitude Training, Mock GDs and Mock PIs, building body & concentration through GYM, Aerobics, Yoga, and Extra-Curricular activities ensures PIMS students to gain the required confidence to become ready to enter the Corporate World.



## LIFE @ PIMS

Where Learning is Exciting and Life is Wonderful



## MONETARY INVESTMENT

**MBA  
PGDM**

COURSE FEE  
**₹ 5,00,000** for 2 years program

HOSTEL FEE  
**₹ 1,10,000** per annum

Apply online for Batch 2020-22  
Visit: [www.pimspune.com](http://www.pimspune.com)

Visit our offices for more details  
Pune, Delhi, Kolkata, Chandigarh,  
Lucknow, Jaipur, Indore, Raipur &  
Guwahati

Phone No: 020-66036700/5/9 | Email: [admission@pimspune.com](mailto:admission@pimspune.com)



Building  
**KNOWLEDGE**

Developing  
**SKILLS**

Creating Future  
**LEADERS**



**AFFORDABLE MANAGEMENT PROGRAM WITH GUARANTEED PLACEMENTS**

“Build Body and Mind together, and the World will be at your feet.”

- Swami Vivekananda Ji

Rigorous Training, Continuous Hard-Work, Daily Exercises & Confidence Building

All aligned to clear Goal is what defines a PIMS Student



# OUR UNIQUE TRAINING DNA

PIMS has developed **strong pillars of advanced training pedagogies** where we focus on a combination of lectures, conceptual discussions, **live demonstrations, business projects, corporate interactions, case analysis with discussions, Model & Strategy designing** followed by implementation and presentations.



## PROFILE ORIENTED TRAINING

PIMS **aligns the training curriculum to Job Descriptions** of various profiles. Students are trained on:

### FINANCE

- Investment Banking
- Treasury
- Equity Research
- Corporate Finance
- Commercial Credit
- Finance Quality Management

### MARKETING

- Channel Management
- Digital Marketing
- Retail Management
- Media Sales
- Pre-Sales
- Market Research

### HR & ANALYTICS

- Business Analysis
- Recruitment & Selection
- Logistics Management
- Performance Management System
- Business Consulting



## SCPS® PEDAGOGY (SECTOR - COMPANY - PRODUCT/SERVICE)

SCPS approach of training is learning any Management concept where **a topic is explained with real world application in various sectors, on different products or services of several companies** which helps in clarifying that **management strategies vary in different sectors for different products or services.**



## COMPARATIVE ANALYSIS METHODOLOGY

PIMS students **develop their research & analytical skills by doing comprehensive comparative analysis** of selected products of chosen companies from selected sector. **Data driven approach is followed by analysis and comparison** between products, companies & sectors focussing on data derived from market.



## EXPERIENTIAL LEARNING

Business Management Skills are built through strong **3-step Experiential Learning Methodology**

1. Learning business from Corporate Heads inside classrooms through **quality discussions & exhaustive interactions**
2. **Case study analysis** & discussions along with **live projects** to build analytical bend of mind
3. Improving the processes of companies through **automization, implementation of PMS models & business strategies**

# STRONG CORPORATE INTERFACE

At PIMS, we are **associated with over 300 top Corporate Heads** to interact & train our students with an objective to **expose our students to understand the real time problems in the organizations, to relate the theoretical concepts learnt in the classrooms to practical concepts and to learn real life application of management practices.**

## CORPORATE EVENTS

Throughout the year, PIMS conducts various events like **Pioneer Convergence, Manufacturing Day, Tech Hour, HR Meet, Analyst Meet** etc. sees **more than 150 Corporate Heads inside campus for Panel Discussions and Knowledge sharing interaction sessions** ensuring more opportunities for students to interact and learn directly from the Industry Experts.

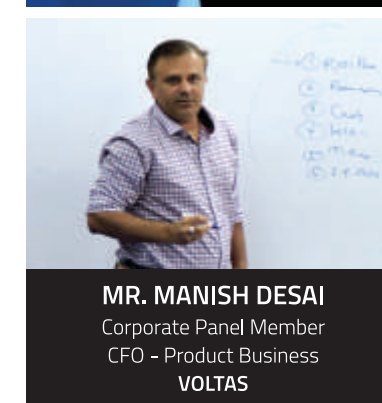


## OUR ESTEEMED CORPORATE PANEL

PIMS association consists of **corporate heads from Marketing, Finance, HR, Operations, Consulting and IT domains** from various sectors like **Financial Services, Banking, IT & ITES, FMCG, Consumer Durables, Paints, Cement, Retail, Automobile, Telecom** etc. who visit PIMS campus frequently on weekends to share their rich content knowledge on various topics.



MR. MAHENDRA PATIL  
GM HR  
Whirlpool India



MR. MANISH DESAI  
Corporate Panel Member  
CFO - Product Business  
VOLTAS



MR. SHASHANK JAGIRDAR  
Corporate Panel Member  
Director HR  
DHL



# EXPERTISE CAREER BOOSTER CERTIFICATIONS & TRAINING

**To compete with Global Competition as future managers, you will be equipped with knowledge of technology & tools which helps in improving quality, standardization & cost reduction.**

Ensures PIMS students with better skills, better packages and preference by companies.

## Advanced Excel Training

- Data Manipulation & Navigation Functions - Basic formatting functions like add/delete rows, sorting, filtering etc.
- Formulae & Other Advanced Functions - VLOOKUP, Pivot Table & Charts, Mathematical functions etc.
- Domain specific training in Finance, Marketing & HR

## BLOOMBERG TERMINAL

- Training on Equities, Derivatives, Fixed Income, Foreign Exchange and Commodities markets
- You can get access to the 24,000+ companies around the world on 360+ exchanges

## IT LAB & LIBRARY

- Subscription of Ace Analyzer and International Journals - Print & Online
- Business Management Books, Business
- Magazines & Newspaper subscriptions



MR. VIJAY JASUJA  
CEO  
SBI CARDS & PAYMENTS



MR. JOACHIM YEBOUET  
CEO  
FOOD CO HOLDING